

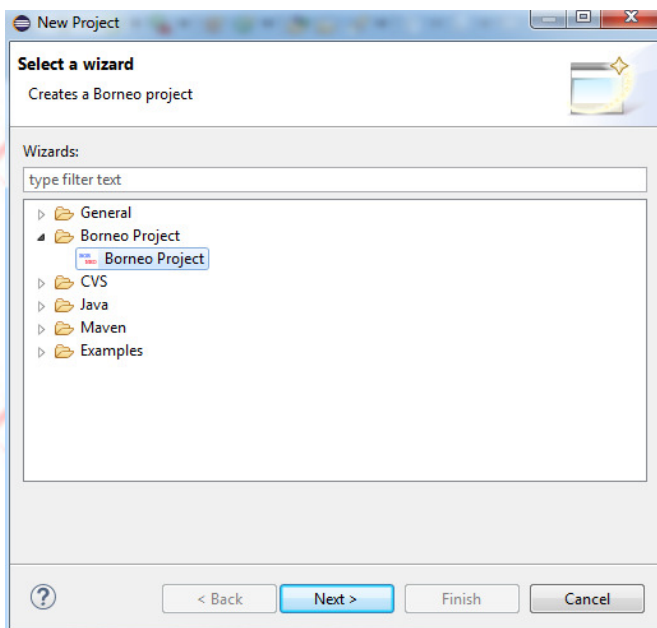
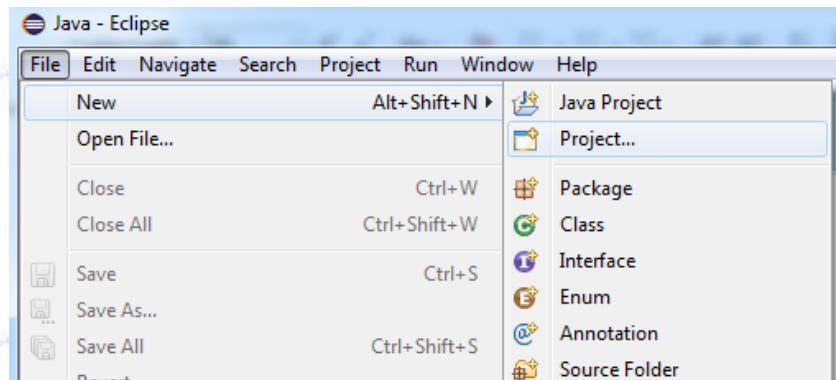
BorneoIce - QuickStart

Start a project

Create a new Project

Click on:

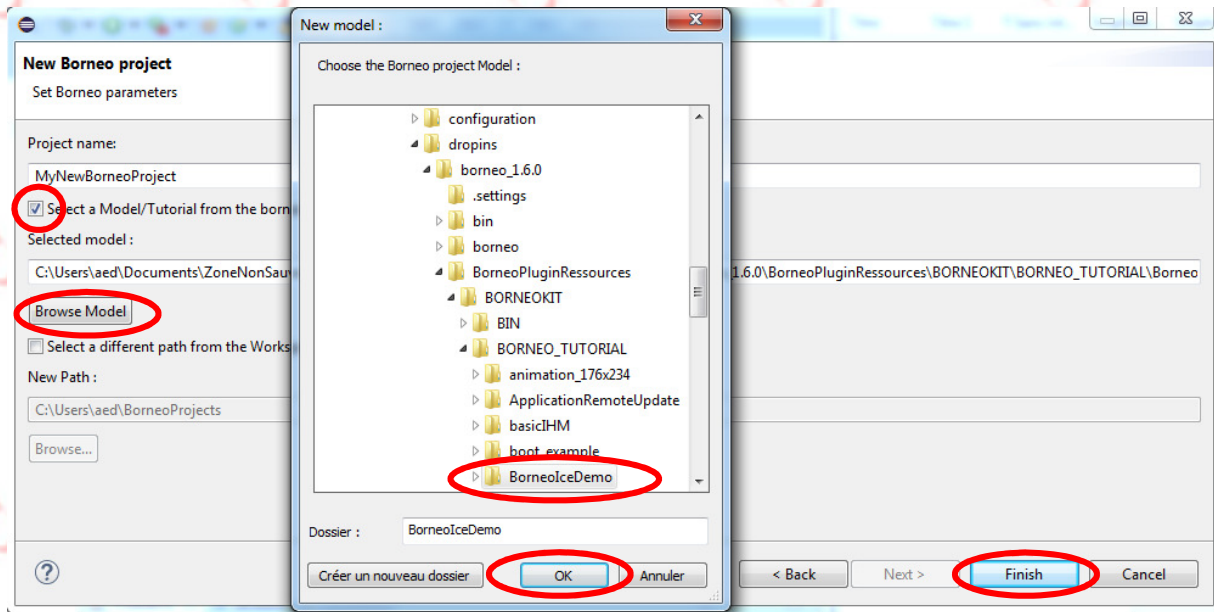
File→**New**→**Project**



Select:

Borneo Project→**Borneo Project**

Click **Next**.



Enter a name for the project.



WARNING : Avoid directory name or path name with “special” characters (such as ‘space’ or ‘é’, ‘è’, ‘\$’, ‘@’,.....)

Select : **Select a Model/Tutorial from the borneo models.**

Click on : **Browse Model**

Select **BorneoIceDemo** in the new window

Click **OK**

You can choose another directory to store your project by clicking on

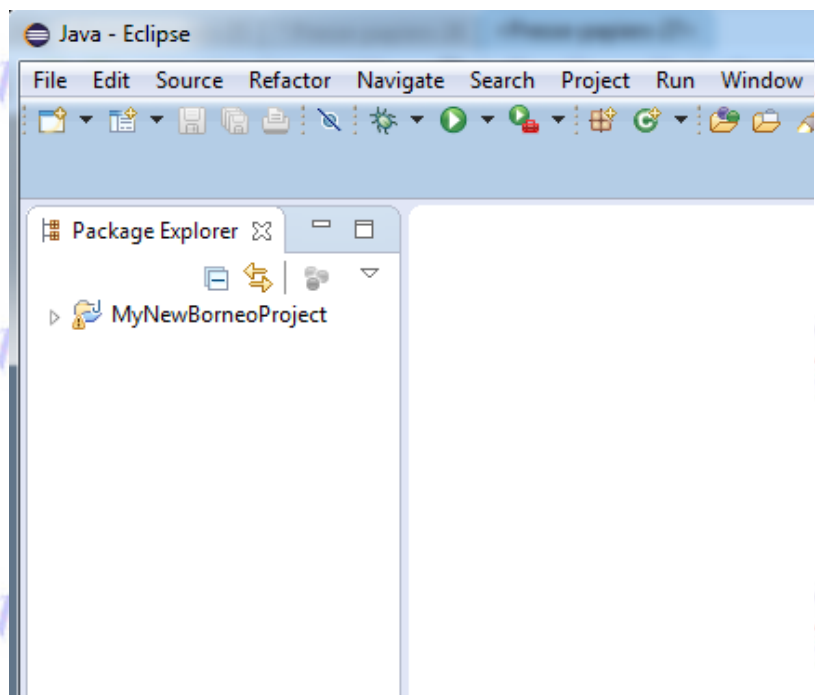
Select a different Path from the workspace and clicking on **Browse...**



WARNING : Avoid directory name or path name with “special” characters (such as ‘space’ or ‘é’, ‘è’, ‘\$’, ‘@’,.....)

Click **Finish**

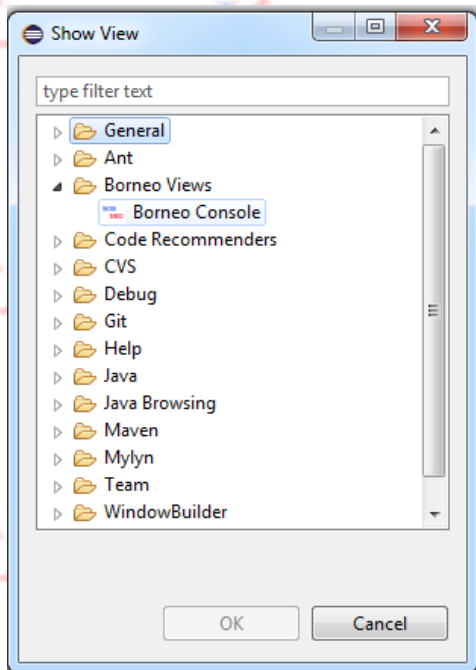
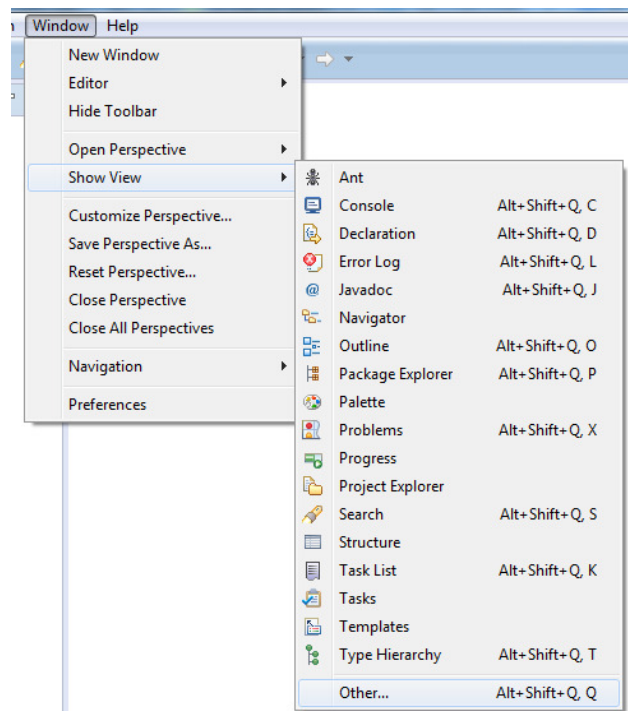
And you should obtain this:



Display Borneo Plugin

Click on :

Window→**Show View**→**Other**

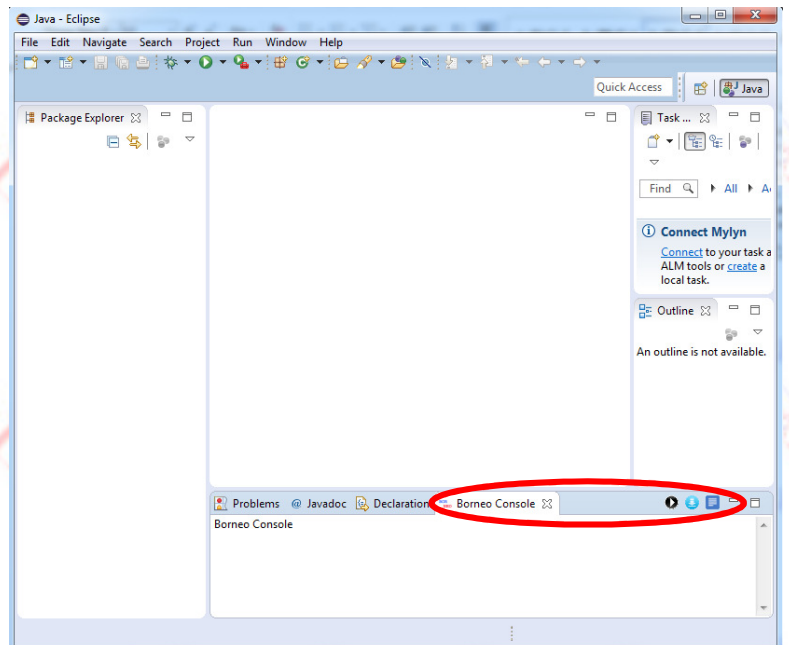


Select :

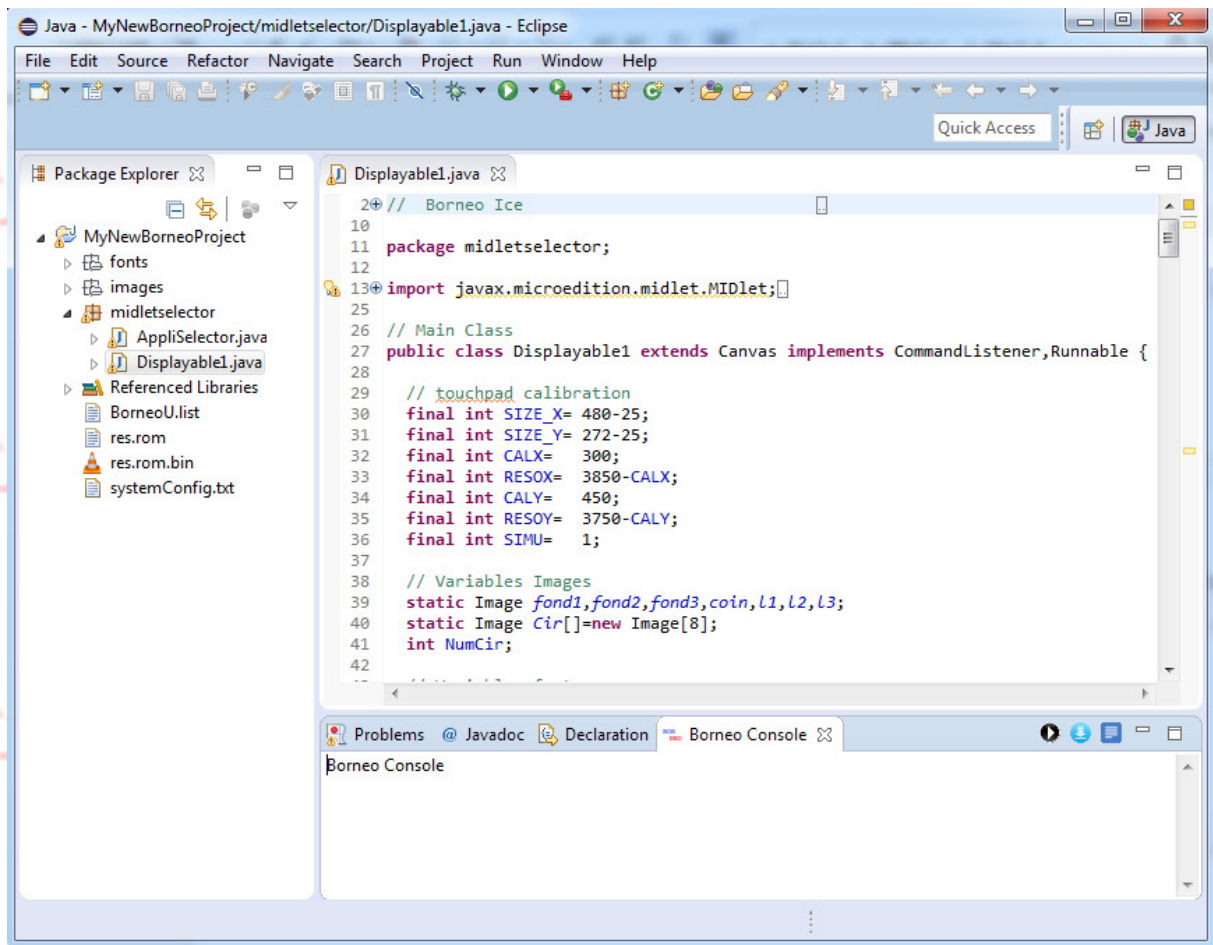
Borneo Views→**Borneo Console**

And click “OK”

And you should see:



Open the application code



In the **Package Explorer**:

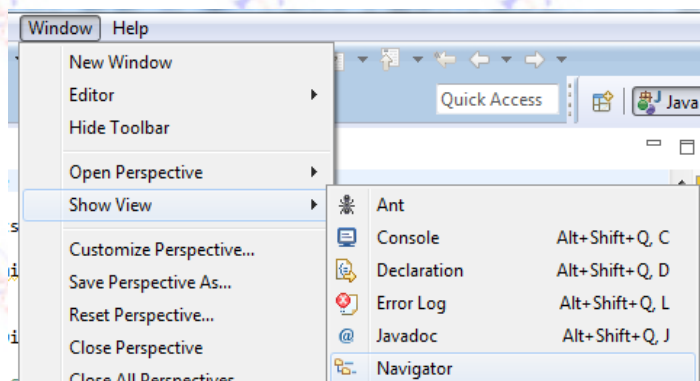
- Double click on : **MyNewBorneoProject**→**midletselector**→**Displayable1.java**

Open File Explorer

Some of us are more used to manipulate file than packages. In this case you can open a file explorer:

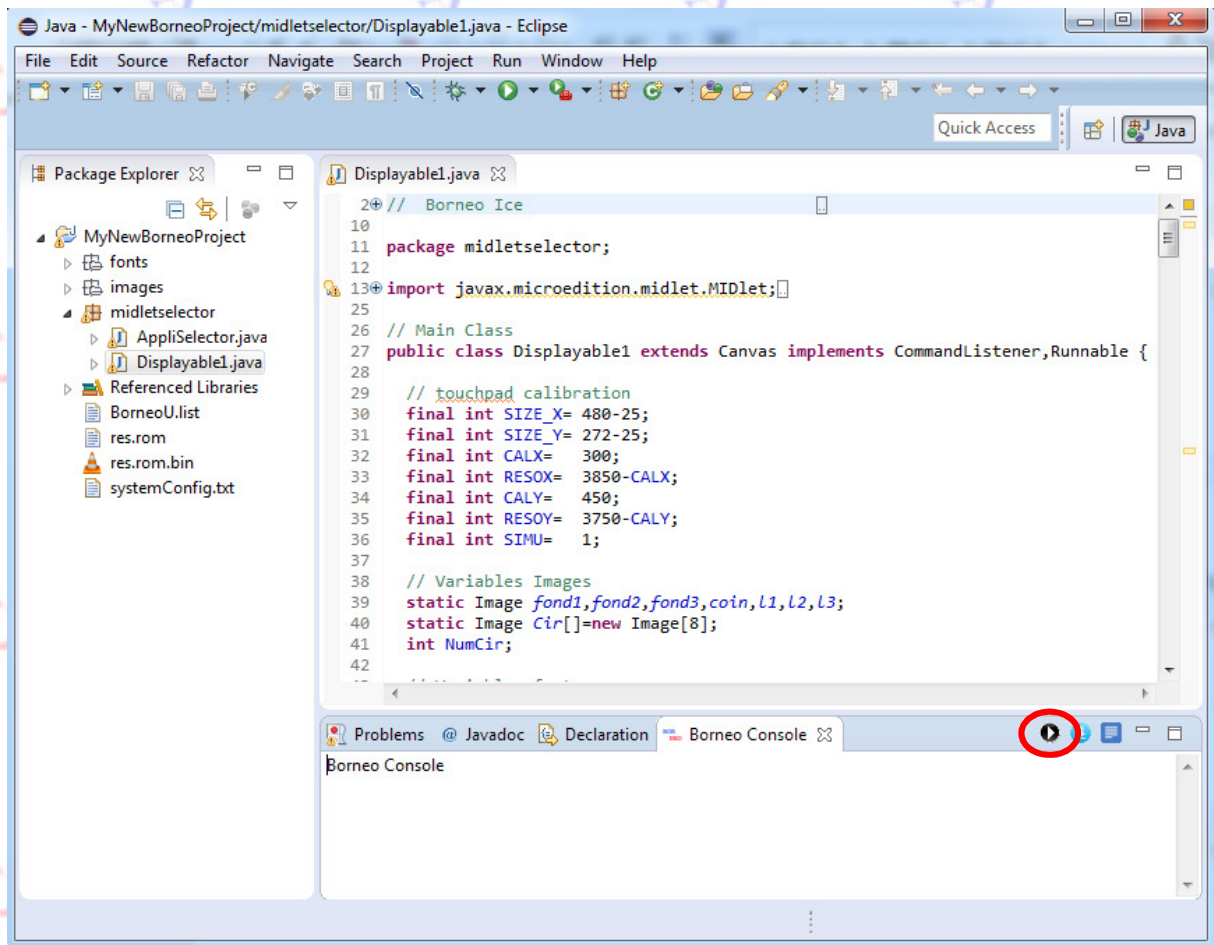
Click on:

Window→**Show View**→**Navigator**



Simulate Application:

Click on the **Simulator Launcher**:



The plugin will create a .rom of your application and will start the simulation. After a short lap of time you will obtain:

You can click on the simulator window in order to verify if your GUI (Graphic User Interface) works correctly.

